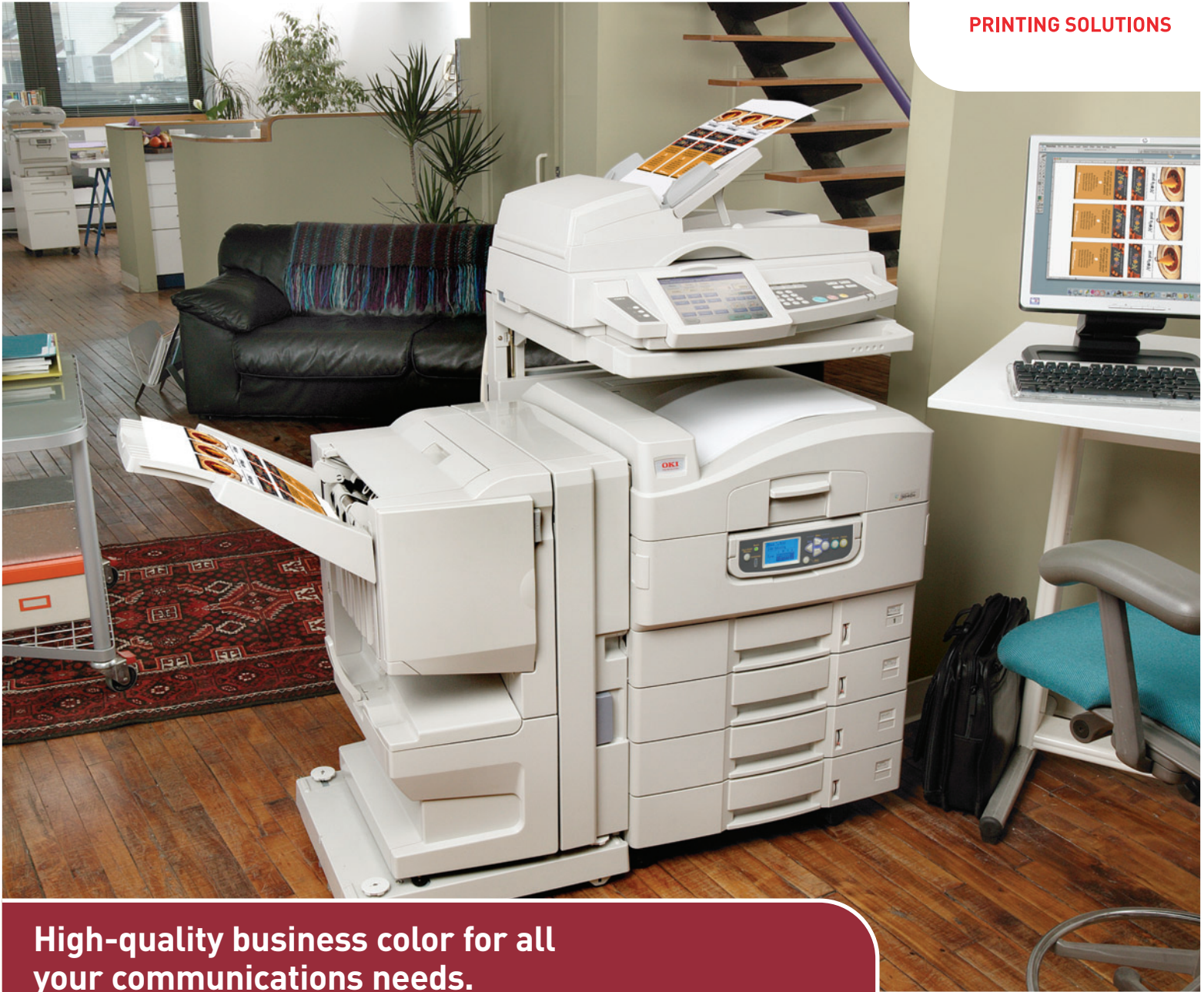


# ES3640e MFP

**OKI**<sup>®</sup>  
PRINTING SOLUTIONS



**High-quality business color for all  
your communications needs.**

**Tabloid-format Color Multifunctional System**



# Introducing the color-centric business communications solution that offers outstanding image quality, unmatched reliability, and a significant return on your investment.

## Designed to improve productivity— with breathtaking results.

Don't make your workgroup run to the corporate copy center every time they need color copies or printouts. Give them the convenience, flexibility and superior quality of the ES3640e MFP Color Multifunctional System from OKI Printing Solutions. Take advantage of Single Pass Color™ Digital technology for brilliant print-and-copy output on a wide variety of media—and enjoy a laundry list of “scan-to” functionality.



Duplexing ADF—scans both sides of a color document simultaneously

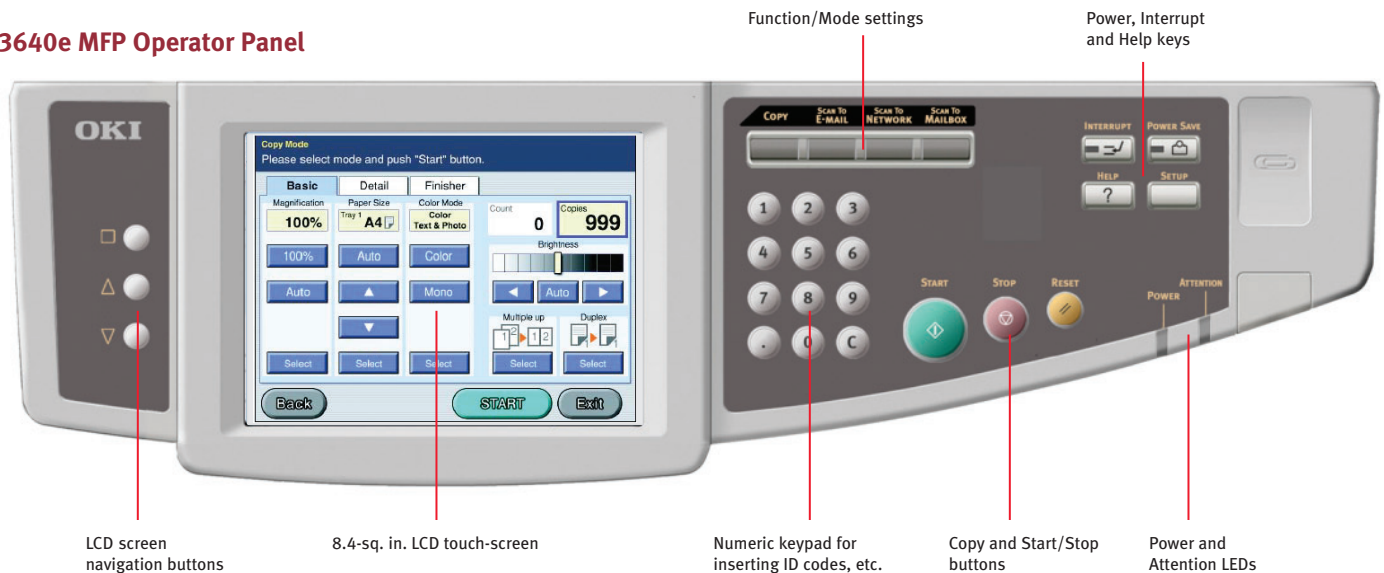


## Use your MFP system to:

- Print full-color documents as fast as 36 pages per minute or black & white pages at up to 40 ppm.<sup>1</sup>
- Produce up to 999 color copies from an original page or graphic—directly from your PC or via the network—at up to 36 copies per minute or black & white copies at up to 40 cpm.<sup>1, 2</sup>

- Send a fax over the network directly from Microsoft® Office documents, e-mail clients, Web clients and API Toolkit-enabled applications.<sup>3</sup>
- Scan hard-copy documents or artwork and save them as PDF, JPEG or TIFF files on your PC.
- Fill in the recipient's e-mail address (“To”) and the “Subject” line on the full-color touch-screen LCD display (just as you would on your PC), then:
  - Send a file as an attachment via your Ethernet network and SMTP server.
  - Send a file over the Internet to a folder on a remote PC, a designated server (FTP site) or, through PSTN protocols, to a fax machine.
- Simply drop a file in the Hold queue or personalized mailboxes on the system's 20 GB hard disk drive.

## The ES3640e MFP Operator Panel



<sup>1</sup> Published performance results based on laboratory testing. Individual results may vary.

<sup>2</sup> First copy out at up to 16 cpm color, 36 cpm mono.

<sup>3</sup> Requires Group III, Class 1 or 2 fax modem and Windows® 2000, NT® or XP Professional Server.





## Bring the world of high-speed color multifunctional convenience to your office—with color management and a wide range of standard “scan-to” features.



ES3640e MFP Color Multifunctional System from OKI Printing Solutions—the business communications solution for your demanding environment.

Your business thrives on color—and large, impactful color documents are part of your daily communications. Think about how many tabloid-size newsletters and brochures, ad layouts, enlargements of photos and illustrations, information-packed spreadsheets, signs and posters you design.

Not to mention the countless letter- and legal-size pages with color in them. Now figure how much all that color printing and copying is costing you...

You need the in-house Color CreationCenter to increase your productivity and lower your expenses.

In other words, you need an ES3640e MFP Color Multifunctional System from OKI Printing Solutions.

### Highlights:

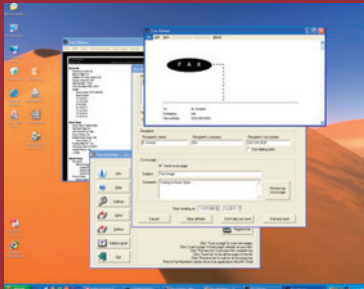
- Network printing in full color at up to 36 ppm, black & white (mono) at up to 40 ppm<sup>1</sup>
- Copies in full color at up to 36 cpm, black & white at up to 40 cpm<sup>1</sup>
- Duplex (2-sided) printing and 20 GB hard disk drive, both standard
- Color Duplex Auto Document Feeder (ADF)—scans both sides of a color document simultaneously

- IEEE-1394 Firewire interface between scanner and printer enables faster data throughput, quicker copy speeds and faster first-copy-out time (FCOT)
- Includes software that enables integrated e-mail, network faxing, document processing and color management
- “Scan-to” features enable creation of electronic files and images from hard copy originals; scan image to color viewer; scan to archive, e-mail, file server and fax server
- 600 x 600 dpi scanning resolution, true 1200 x 1200 dpi print resolution for clear, sharp text and graphics
- 8.4-sq. in. color LCD touch-screen scanner operator panel—easy menu control of document type, color density, paper trays, duplex copying
- 50-sheet ADF supports up to tabloid-size documents; 230-sheet multi-purpose tray (on printer) handles up to banner-size sheets
- 13 preset copy scaling keys for one-touch operation; zoom range from 25% to 400% in 1% increments
- Single Pass Color™ Digital technology—printer handles up to 110 lb. index card stock; prints on sheets up to 12.9" x 47.24" long
- Standard 1,290-sheet paper capacity; 2,350 sheets max. with options
- Job Accounting software and Web-based printer management utility standard
- Total support from your local Authorized OKI Printing Solutions Provider
- Toll-free, live technical assistance 24/7/365: 1.800.OKI.DATA (800.654.3282)<sup>2</sup>

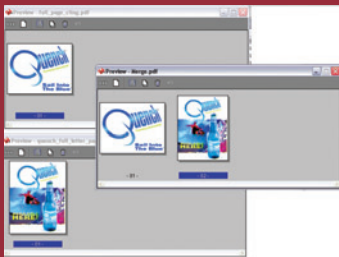
<sup>1</sup> Published performance results based on laboratory testing. Individual results may vary.

<sup>2</sup> Available in the U.S. and Canada only.

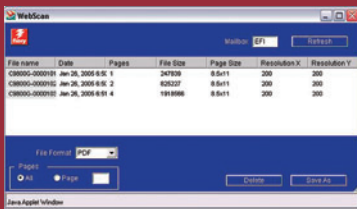
# The ideal digital network performer.



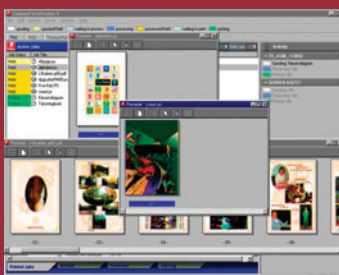
Equisys Zetafax™ for Networks



EFI DocBuilder™ 1.0



EFI WebScan™



EFI Command WorkStation™

Workgroups on the network can utilize the scan-to convenience of the ES3640e MFP from their PCs to process and manage document files. The system includes robust productivity and job management software, including our Job Accounting utility that lets administrators track and gauge print-and-copy usage for a better bottom line.

Individuals can take advantage of in-house access to copying with fast output speeds—in color and black & white—and the ease of scanning and sending electronic files with a touch.

- PCL® 6 emulation and true Adobe® PostScript® 3™—works quickly and efficiently in both Windows® and Mac® platforms.
- Factory-configured with a 10/100 Base-T internal Ethernet print server and powerful network tools—performs smoothly and reliably in the most popular shared environments.

## ES3640e Multifunctionality Out of the Box

### Productivity Solutions:

**ABBYY FineReader™ 7.0 Corporate Edition:** an OCR application designed specifically for network environments, it offers the highest level of accuracy and format retention—an ideal solution for converting and re-purposing paper documents and PDF files for editing and archiving purposes.

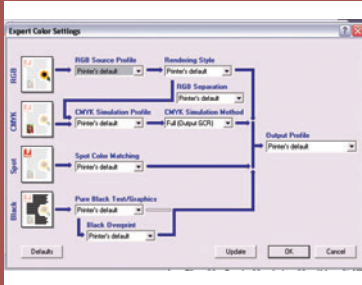
**Equisys Zetafax® for Networks:** a versatile network fax software solution for both desktop and hard-copy faxing, enabling employees to send and receive faxes from their PC or from the network-connected ES3640e MFP.

### Job Management:

**EFI DocBuilder™ 1.0:** edit and assemble entire documents as PDF files before RIPping them with this server-based application, including support for mixed page sizes.

**EFI Fiery® Downloader:** allows users to download file formats supported by the RIP interpreter, including PostScript files, PC-based PRN files, and Encapsulated PostScript (EPS) files.

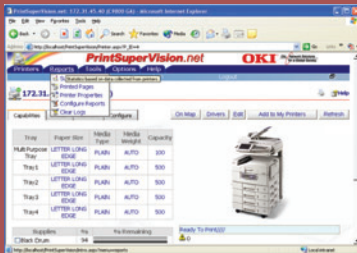
**EFI Job Monitor:** gives the user up-to-date status on print jobs sent to the ES3640e MFP Fiery device; also tracks the status of each print job sent and issues error alerts.



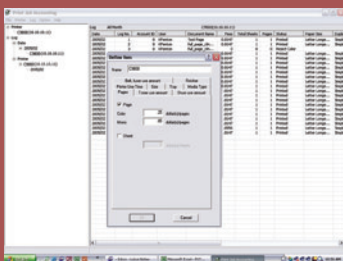
EFI ColorWise™ Pro Tools



EFI SpotOn™



PrintSuperVision



Job Accounting software

## Graphics Applications:

**EFI ColorWise™ Pro:** allows administrator to access and effect color management by the Fiery; manipulates each print job according to global (previously established) standards and job-specific settings.

**EFI Command WorkStation™ 4:** automatically identifies and displays information about Fiery servers on the network; enables operators and administrators to track and manage jobs, and oversee job flow through the Fiery.

**EFI SpotOn™:** used to edit spot color tables or define custom spot colors (ex: “Corporate Red”); gives the ability to adjust/change spot colors and copy colors from other palettes into custom palettes. (ES3640e MFP GA version only.)

**EFI HotFolder™:** provides the user with a simple and automated method for sending print files to the Fiery controller; allows document printing via drag & drop or print-to-file processes; enables automated batch processing for PostScript® and PDF files. (ES3640e MFP GA version only.)

## Networking Utilities:

**MFP Network Utility:** Manages network-connected OKI Printing Solutions MFP devices; includes tools for Address Books, Individual Profile Manager, Color Adjustment and LDAP Management.

**Network Extension:** Creates an additional tab (“STATUS”) in PCL and PostScript drivers that allows the user to monitor the status of selected printers.

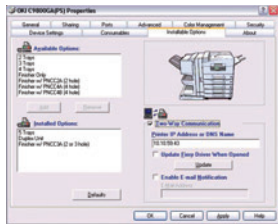
**PrintSuperVision:** Internet-based software components that enable administrators to access and distribute printer data and control printer functionality.

## Print Tracking:

**Job Accounting (Server and Client) Software:** enables tracking of color printing costs and easy monitoring and control of printer usage. Server component allows configuration of printing devices, costs and printer access; client component is installed on PCs to provide data on each print job.



# ES3640e MFP Graphic Arts edition: for professional color results.



EFI Fiery Driver—intuitive and easy to use; access information on your ES3640e MFP system.

Out of the box, the ES3640e MFP GA (graphic arts model) is a color-centric user's dream. It's the perfect solution for advertising agencies, design firms, marketing communications departments, even commercial printers that care as much for their budgets as they do for their products.

When precise, consistent pre-press color accuracy is needed, this system supplies it—with the addition of color management software from EFI:

- **SpotOn™**—a color-editing tool that enables users to create and define custom spot colors; supports the major color ink matching systems (such as HKS, TOYO and DIC); ensures that the MFP GA reproduces unique mixtures accurately from job to job.
- **AutoTrapping™**—automatically corrects for color-against-color misregistration—down to one pixel.
- **HotFolders™**—eliminates the repetitive tasks and possibility of user error in configuring settings for multiple jobs.



## Take secure control of the way your MFP is used.

The ES3640e MFP and ES3640e MFP GA models are designed to provide peace of mind by allowing administrators to restrict access to multifunctional features for individuals or workgroup users:

- Assign individual PIN identification codes to your personnel; they can unlock the restricted functions—with your permission—by entering their codes into the machine's control panel.
- Using Lightweight Directory Access Protocol (LDAP) and user authentication, you can link access restrictions to your corporate e-mail directory: an employee attempting to send an internal e-mail from the ES3640e MFP must first enter a user name and password on the operator panel—and the e-mail server will respond by granting or denying access.
- Enhanced security features on the ES3640e MFP enable you to filter out packets received from specific IP addresses and prevent unsecured connections to your servers.
- For compliance applications, the MFP system provides EFI DirectQueue™, a means for identified users to bypass the buffer on the hard disk drive when retrieving sensitive files.
- Job Log Protect requires a password to access the hard drive's job log.
- Clear Server deletes all jobs saved on the hard drive for security reasons.

# Proven print media and long-lasting consumables from OKI Printing Solutions.

## Get the most flexibility in your choice of media.

With an ES3640e MFP, you can output reams of reports and high-impact presentations with color graphics; postcards on up to 110-lb. index; mailers on waterproof, tear-resistant sheets; transparencies; even attention-grabbing banners up to 12.9" by 47.24" long!

Use standard off-the-shelf media or select your stock from the tested—and proven—media collection available through your Authorized OKI Printing Solutions MFP Provider.



Paper and film media—including banner sheets—are tested and proven to work reliably with OKI Printing Solutions MFP systems.

## Improve your bottom line.

With its outstanding reliability, long-lasting consumables and competitively low cost per print/copy, the ES3640e MFP delivers cost-effective operation as well as an exceptional return on your investment. You'll control your operating costs by:

- Supporting one device rather than several—or one less efficient multifunctional device
- Stocking fewer replacement supplies
- Reducing service interruptions

And with the cost of a color page from your ES3640e MFP coming in on par with the black & white page cost that you're getting from your old monochrome MFP, your purchase decision is looking downright brilliant.



Long-lasting consumables from OKI Printing Solutions lead to lower operating costs and a better bottom line.

## Enjoy unmatched support and technical expertise.

You can expect total support from your Authorized OKI Printing Solutions MFP Provider. If you need technical assistance—even at 3 a.m.—you can speak to a live expert by calling toll-free 24/7/365: 800.OKI.DATA (800.654.3282).<sup>1</sup>

The ES3640e MFP and ES3640e MFP GA from OKI Printing Solutions. High-quality, consistent and secure color printing, copying and scanning, plus document management. They're your Color CreationCenters—the business communications solutions for your demanding environment.



<sup>1</sup> Available in the U.S. and Canada only.

# ES3640e MFP

## Specifications

### Printer

- **Print Speed:** up to 36 ppm Color; up to 40 ppm Mono<sup>1</sup>
- **Processor:** EFI X5e 1 GHz
- **File Storage:** 20 GB Hard Disk Drive
- **Print Resolution:** True 1200 x 1200 dpi
- **Duty Cycle:** Up to 150,000 pages per month
- **Connectivity:** IEEE-1284 bi-directional parallel; USB v2.0; Auto interface switching
- **Network I/F:** OkilAN® 10/100 Base-T Internal Ethernet Print Server standard
- **Emulations:** PCL® 5c, PCL 6; Adobe® PostScript® 3™ standard; PCL XL 2.1; Direct PDF Printing (Windows® OS only)
- **Operating Systems:** Stand-alone and network – Windows XP, Me, 2000, 98, NT® 4.0; Mac® OS 8.6 – 9.x, OS X v10.1–10.3.8
- **Resident Scalable Fonts:** 136 Adobe PostScript fonts; 45 PCL fonts
- **Bitmap (PCL) Fonts:** Line printer, OCR-A and OCR-B
- **Options:** Finisher

### Copier

- **Copy Speed:** up to 36 cpm Color; up to 40 cpm Mono<sup>1</sup>
- **Operator Panel:** 8.4-sq. in. Touch-screen LCD; full-color GUI
- **Copy Resolution:** 600 x 600 dpi
- **Copy Modes:** Mixed, Text, Photo, Hi-Resolution
- **Copy Scaling:** 13 preset settings
- **Zoom Range:** 25% to 400% in 1% increments
- **Density/Sharpness Control:** 11 levels (lighter/darker)
- **Color Intensity Control:** 11 levels + 4 color presets
- **Background Removal:** 11 levels
- **Text-from-Photo Separation:** Yes
- **Copy Quantity Selection:** 1 – 999 copies from original
- **Copy Features:** Auto Scaling, N-up, Edge/Center Erase, Contrast, Brightness, Book Copy, Job Build, Job Offset, Duplex, Auto Tray Switching, Margin Shift
- **Size/Orientation Auto-Detect:** Differentiates between Letter/Landscape, Letter/Portrait, and Tabloid originals

### Scanner

- **Scan Type:** Duplex sheet feed (ADF scans both sides of sheet at same time)
- **Scan Method:** Color CCD
- **Scan-to-PC:** Create electronic file from hard copy original – EFI Fiery Scan (network TWAIN scanning); Fiery WebScan (Web browser-based scanning)
- **Scanner Data/Control:** IEEE-1394 Firewire and USB v2.0
- **Scan-to-Email/Scan-to-File**

File Formats	PDF, TIFF, M-TIFF, JPEG, PCX
Protocols	SMTP, POP3 FTP
Mail Server Authentication	LDAP, User Level, Kerberos/Simple

- **Imaging Applications:** Works with most popular image editing software packages
- **Network TWAIN Driver:** Windows 98 and higher

### Network Fax<sup>2</sup>

- **LAN Fax Software:** Equisys ZetaFax® Business Edition included. Support for two fax server lines, e-mail gateway, Web client, DDI routing, Queue management file formats
- **File Formats:** ASCII, BMP, DCX, EPS bitmaps, Epson® FX and LQ series, GIF, JPEG, PCX, PICT, Targa, TIFF and others.

### Color Controls

- **Color Management:** EFI Fiery® ColorWise™ Pro, ColorSwatch™ and Spot-On™ editing tool (GA version only); PostScript CRD, Windows ICM, Input/output ICC profiles. Also supports color management systems that utilize ICC profiles (Apple® ColorSync®, Microsoft® ICM, Adobe® applications, QuarkXPress™, and CorelDraw®)
- **Ink Simulations:** SWOP, Euroscale and others
- **Color Matching Modes:** sRGB, Monitor Simulations, Digital Camera

### System Memory

- **Standard Imaging RAM:** 512 MB
- **Maximum Imaging RAM:** 1,024 MB
- **Scan Buffer RAM:** 128 MB
- **Image Processing RAM:** 384 MB
- **Scanner Flash Memory:** 512 KB

### Paper Handling

- **Scanner ADF:** Up to 50 sheets, 16 lb. – 28 lb. bond
- **Printer Paper Input:** Standard 2 x 530-sheet trays – Tabloid Extra/A3 Extra/Legal/Executive (1,060 sheets); Max. 4 x 530-sheet trays (2,120 sheets)
- **Manual Feed Input:** 230 sheets – Overhead transparencies, mailing label stock, envelopes, banners up to 12.9" x 47.24" (32.7 cm x 120 cm)
- **Paper Weight:** Main, 2nd, 3rd and 4th trays 20 lb. – 57 lb. bond; Manual Feed tray 20 lb. – 150 lb. index; Duplexer 20 lb. – 32 lb. bond
- **Automatic Duplexer:** 2-sided printing standard

### Optional Finisher

- **Features:** Sort/Non-sort, Staple, Punch, Book bind
- **Number of Trays:** 2
- **Paper Capacity:** 1,000 sheets
- **Paper Size:** Up to 11" x 17"
- **Max Number Sheets for Stapling:** 50 sheets
- **Stapling Positions:** Single- and multi-staple; edge and center (saddle-stitch)

### Optional Punch Unit

- **Hole Punching:** 2- and 3-hole punch

### Print Media

- **Bright White Proofing Sheets:** 8.5" x 11" (32 lb. bond)
- **Letter-size Gloss Paper:** 8.5" x 11" (10-point)
- **Tabloid-size Gloss Paper:** 11" x 17" (10-point)
- **Premium Color Transparency Film:** 8.5" x 11" sheets
- **Premium Card Stock:** 8.5" x 11" (60 lb. cover, 90 lb. index, 110 lb. index)
- **SynFlex™ Paper:** 8.5" x 11" (waterproof and tear-resistant)
- **Premium Envelopes:** #10 size
- **Banner Paper:** 12.9" x 35.4"

For more information on the ES3640e MFP and supplies, including OKIcare® Extended Service Programs: **1.800.OKI.DATA (800.654.3282)**.<sup>3</sup>

<sup>1</sup> Letter-size sheets. Published performance results based on laboratory testing. Individual results may vary.

<sup>2</sup> Requires Group III, Class 1 or Class 2 fax modem and Windows 2000, NT or XP Professional Server.

<sup>3</sup> Available in the U.S. and Canada only.



Specifications are subject to change without notice.

© 2005 Oki Data Americas, Inc. OKI Reg. T.M., M.D., OKIcare, OkilAN Reg. T.M., Oki Electric Industry Co., Ltd. Single Pass Color T.M. and design Reg. T.M., Oki Data Corp. SynFlex T.M., Oki Data Americas, Inc. Fiery Reg. T.M., ColorWise, WorkStation, SpotOn, Hot Folders T.M. EFI Inc. Zetafax Reg. T.M., Equisys Inc. SWOP Reg. T.M., SWOP, Inc. Adobe, PostScript, Acrobat Reg. T.M., Postscript 3 T.M., Adobe Systems Inc. Microsoft, Windows, Windows NT Reg. T.M., Microsoft Corp. PCL, Reg. T.M., Hewlett-Packard Co. Apple, Mac, ColorSync Reg. T.M., Apple Computer Inc. QuarkXPress T.M., Quark Inc. CorelDRAW Reg. T.M., Corel Corp. Intel Reg. T.M., Intel Corp. Energy Star Reg. T.M., U.S. EPA. USB-Logo T.M. Universal Serial Bus Implementers Forum, Inc.

### OKI DATA AMERICAS, INC.

USA  
2000 BISHOPS GATE BLVD.  
MOUNT LAUREL, NJ 08054-4620  
TEL: 800.OKI.DATA (800.654.3282)  
FAX: 856.222.5320

CANADA  
2735 MATHESON BLVD. EAST  
MISSISSAUGA, ONTARIO L4W 4M8  
TEL: 905.238.4250  
FAX: 905.238.4421

LATIN AMERICA AND MEXICO  
2000 BISHOPS GATE BLVD.  
MOUNT LAUREL, NJ 08054-4620  
TEL: 856.231.0002  
FAX: 856.222.5071

[WWW.OKIPRINTINGSOLUTIONS.COM/US](http://WWW.OKIPRINTINGSOLUTIONS.COM/US)